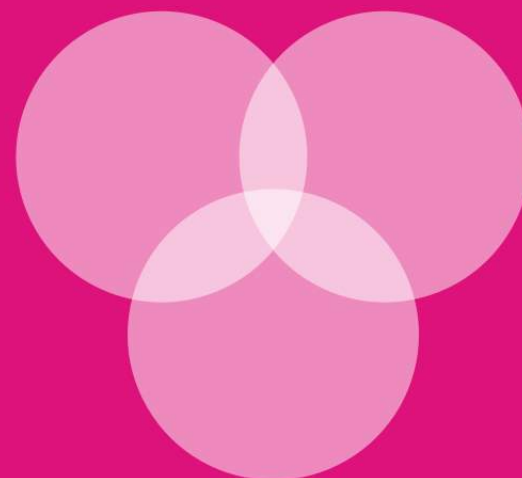


ISUO Chem

ANHUI I-SOURCING INTERNATIONAL CO.,LTD
ADD.: 103 Science Avenue,
High Tech Zone, Hefei, Anhui, China 230088
Tel: 86-551-62376770, 62376771, 62376772
Fax: 86-551-65994613
Email: admin@i-suo.com
Web: www.ispigment.com

ISUO Chem
爱索化学



PEARLESCENT PIGMENT



Contents

Company introduction 03

Pearlescent Pigment Color Chart

Silver White 04-05

Interference 06-09

Royal Pearl 10-11

China Red 12-13

Copper 14-15

Application 16-21

COMPANY INTRODUCTION

ISUO Chem is the manufacturer and exporter of pigment and wallpaper. We are experienced and active in coating & printing industry over 15 years. We help people to live beautifully and fashionably by developing innovative pigment, decorative wallpaper, new technology and new materials. Our production base has over 100 workers and can produce 5000MT pearl pigment and 2000MT glitter powder annually.

We have international R&D center and advanced labs in Europe and USA. We aim to be the fashion leader of effect pigment in the world. We help our customers to upgrade their product, add their product values and make their product more competitive and distinctive.

We are currently participating in the markets of Europe, North and South America, South-East Asia & Middle East. Our experienced team specializes in understanding these key markets and cares about your unique needs. ISUO's strong R&D and safe supply chain are your assurance of stable quality and consistent color.



Particle size test (Malvern)



ICP Heavy metals test



X-Rite Spectrophotometer Instrument



BET Tester



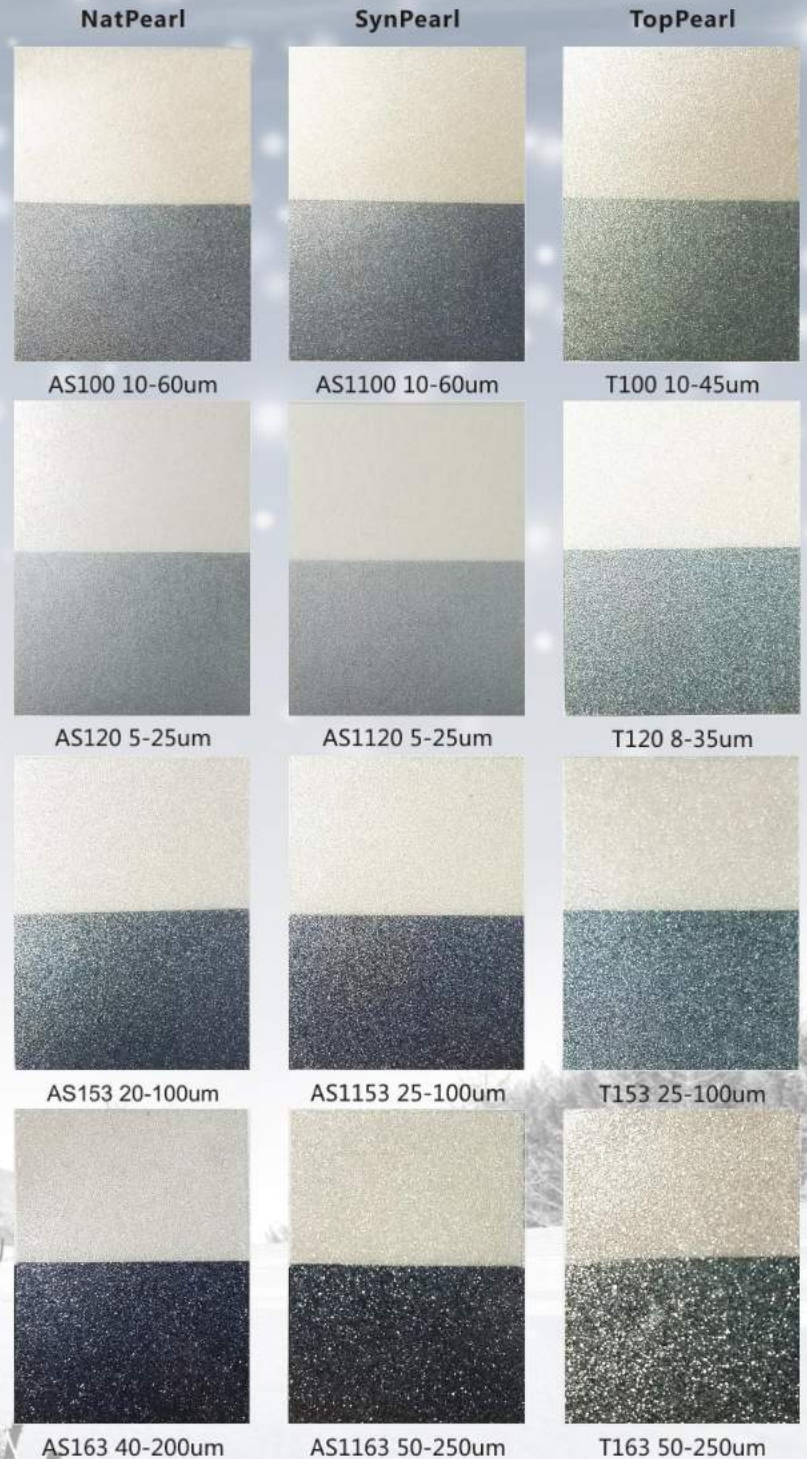
ISUO / COLOR CHART

INDUSTRIAL SERIES	PRODUCT NAME	Natural Mica	TiO2	SnO2
AS100 10-60um	Silver pearl	•	•	
AS120 5-25um	Luster satin	•	•	
AS153 20-100um	Flash pearl	•	•	•
AS163 40-200um	Shimmer pearl	•	•	

CRYSTAL SERIES	PRODUCT NAME	Synthetic Mica	TiO2
AS1100 10-60um	Penguin White	•	•
AS1120 5-25um	Penguin White Satin	•	•
AS1153 25-100um	Flash Penguin White	•	•
AS1163 50-250um	Super Penguin White	•	•

TOP PEARL	PRODUCT NAME	Synthetic Mica	TiO2	Tin Oxide
T100 10-45um	Super Twinkling Penguin White	•	•	•
T120 8-35um	Super Bright penguin white luster	•	•	•
T153 25-100um	Super flash Penguin white	•	•	•
T163 50-250um	Super flash shimmer white	•	•	•

© SILVER WHITE



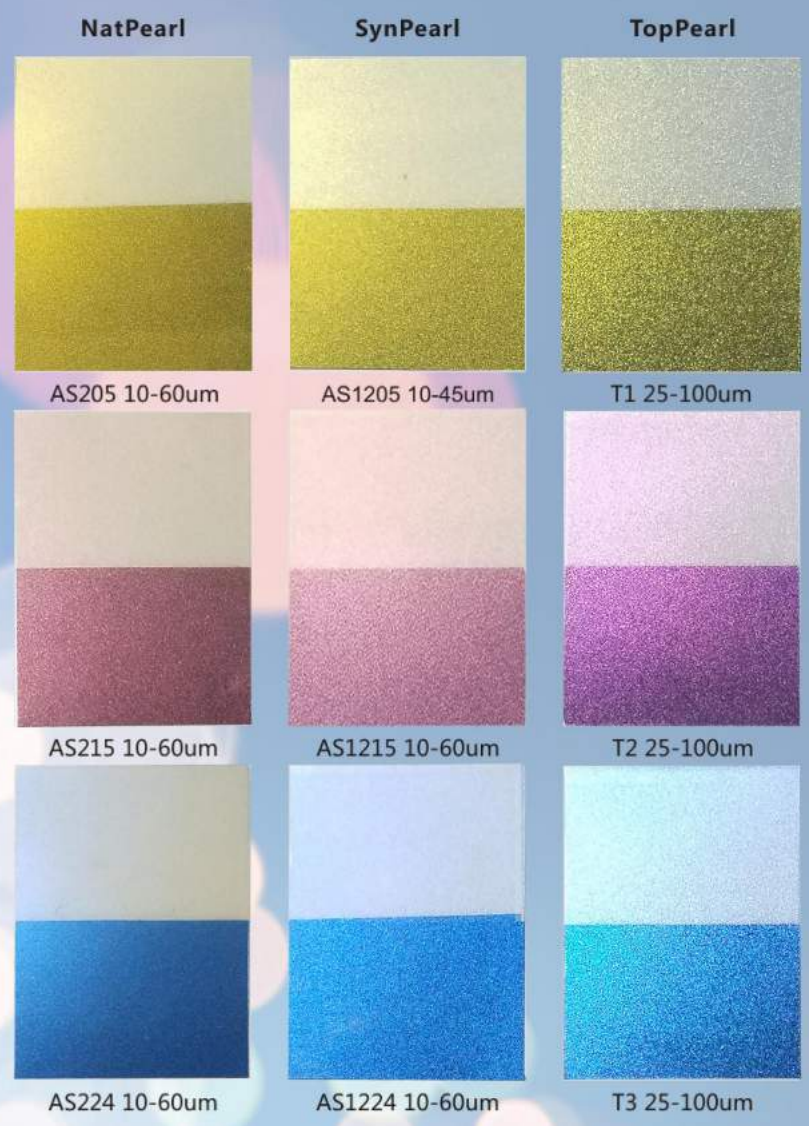
**Silver white
pearlescent pigment**

INDUSTRIAL SERIES	PRODUCT NAME	Natural Mica	TiO2	SnO2
AS205 10-60um	Rutile Platinum Pearl	•	•	•
AS215 10-60um	Rutile Red Pearl	•	•	•
AS224 10-60um	Rutile Violaceous Pearl	•	•	•
AS219 10-60um	Rutile Violet Pearl	•	•	•
AS235 10-60um	Rutile Green Pearl	•	•	•

CRYSTAL SERIES	PRODUCT NAME	Synthetic Mica	TiO2	SnO2
AS1205 10-45um	Dazzling Granary	•	•	•
AS1215 10-60um	Fire Goldfish	•	•	•
AS1224 10-60um	Peacock Blue	•	•	•
AS1219 10-60um	Amethyst	•	•	•
AS1235 10-60um	Green Parrot	•	•	•

ISUO / COLOR CHART

◎ INTERFERENCE



**Interference
pearlescent pigment**

TOP PEARL	PRODUCT NAME	Synthetic Mica	TiO2	Tin Oxide
T1 25-100um	Super flash Granary	•	•	•
T2 25-100um	Super flash fire goldfish	•	•	•
T3 25-100um	Super flash peacock	•	•	•
T4 25-100um	Super flash Amethyst	•	•	•
T5 25-100um	Green Parrot	•	•	•

ISUO / COLOR CHART

◎ INTERFERENCE



**Interference
pearlescent pigment**

ROYAL PEARL	PRODUCT NAME	Natural Mica	TiO2	Fe2O3		
AS6305M 10-60um	Solar Gold	•	•	•		
AS6325 5-25um	Solar Gold Satin	•	•	•		
		Synthetic Mica	TiO2	Fe2O3	SnO2	
AS6305 10-60um	Sunny Gold	•	•	•	•	
AS6307 10-60um	Bright Green Gold	•	•	•	•	
AS6355 30-150um	Super Shining Gold	•	•	•	•	
AS6315 <15um	Royal Gold satin	•	•	•		
AS6311 30-100um	Solar Shining Gold	•	•	•		
AS6366 10-200um	Flash Gold	•	•	•		

ISUO / COLOR CHART

© ROYAL PEARL



**Royal pearl
pearlescent pigment**

INDUSTRIAL SERIES	PRODUCT NAME	Natural Mica	Fe2O3
AS504 10-60um	Wine red	•	•
AS502 10-60um	Brown	•	•

TOP PEARL	PRODUCT NAME	Synthetic Mica	Fe2O3
R1 10-40um	Auspicious Red	•	•
R2 10-40um	Mars Red	•	•

NatPearl



AS504K 10-60um



AS502 10-60um

TopPearl



R1 10-40um



R2 10-40um

© CHINA RED

ISUO / COLOR CHART

China red pearlescent pigment

INDUSTRIAL SERIES	PRODUCT NAME	Natural Mica	Fe2O3
AS500 10-60um	Bronze	•	•
AS522 10-60um	Bronze Satin	•	•

TOP PEARL	PRODUCT NAME	Synthetic Mica	Fe2O3
R3 10-40um	Desert Copper	•	•
R4 10-40um	Solar Copper	•	•



Copper pearlescent pigment

© COPPER

ISUO / COLOR CHART



Pearlescent Pigment
application

Paint

Pearlescent pigment is widely used in many types of paint such as construction material, coil coating, powder coating, leather/wood/plastic coating, electronics, motorcycle and automotive components, OEM painting etc.

ISUO Chem pays attention to your special needs for particle size distribution, color strength, luster, sparkle, silky, optical variable effect, weather-resistance, etc.

ISUO Chem can offer you the following testing to ensure strict consistency from batch to batch:
particle size distribution analysis, test of oil absorption of organics, dispersibility, QUV weathering test, X-rite test and color card test.



Plastic

Pearlescent pigment is suitable for all thermoplastic & thermosetting plastics. We can see it in automotive components, cosmetic packages, films, toys, daily products and art works, etc...

ISUO Chem cares about your concern of yellowing, black spots, flow lines, weld lines, crashing pearls, bubbles etc.

ISUO Chem can offer you the following testing to ensure strict consistency from batch to batch:
particle size distribution analysis, QUV weathering test, X-rite test, plastic board test and color card test.

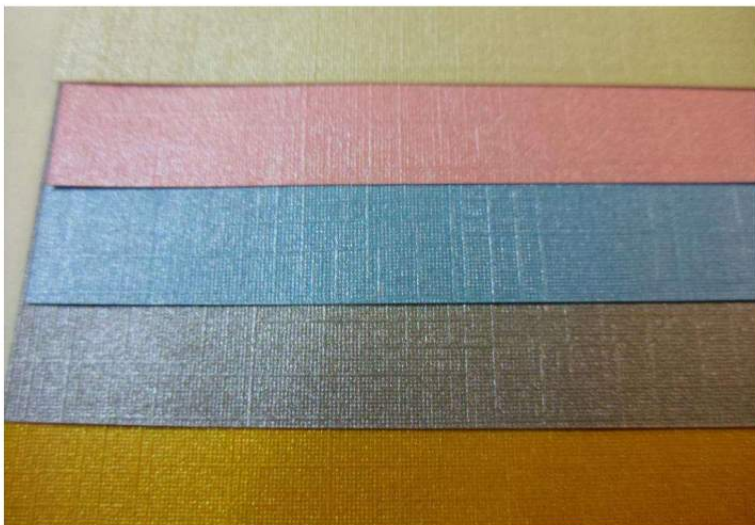


Printing ink

Pearlescent pigment is suitable for both water-based and solvent-based printing ink. It is also suitable for different printing methods such as offset printing, gravure printing, screen printing, etc.

ISUO Chem provides solutions for improving poor pearl effect, viscosity problem, static problem & dry problem etc.

ISUO Chem can offer you the following testing to ensure strict consistency from batch to batch:
particle size distribution analysis, oil absorption, X-rite test and color card test.



More applications:

Cosmetics, automotive paint, agriculture, epoxy flooring, textile, stationary, ceramic, leather, etc.

